

## Plant Lists for Two Properties Participating in the Healthy Soils Program

This article was written by Devii Rao, UCCE Livestock and Natural Resources Advisor for San Benito, Monterey, and Santa Cruz counties. It was originally published on the [Livestock and Range Blog](#) on 9/28/2020.



*Photo by Pam Krone. March 2019 Property 1, Field 1, plot T3.*



*Photo by Pam Krone. March 2019 Property 1, Field 2, plot C2.*

This is a companion article to the [Costs of Compost Addition](#) article about the same project.

Pam Krone, Agriculture Water Quality Coordinator with California Marine Sanctuary Foundation / Monterey Bay National Marine Sanctuary received a Healthy Soils grant from the California Department of Food and Agriculture

in spring 2018 to increase carbon sequestration in the soil while also supporting farming and ranching operations. One of the primary activities of this grant was applying compost to grasslands in order to increase carbon sequestration. Grant activities took place over three years from 2018-2020. Compost was spread two years in a row (December 2018 and November 2019) at two properties in coastal Monterey County at a rate of 4 dry tons per acre. The third and final compost application will be in fall 2020.

For this article we will call the two sites Property 1 and Property 2 (Figures 1 and 2). At property 1, compost was added to three different fields. Each field had three treatment plots (with compost addition) and three control pots (with no compost addition). Treatment plots at Property 1 were labeled as T1, T2, and T3. Control plots were labeled as C1, C2, and C3. Fields 1 and 2 were in grassland and Field 3 was in an oak woodland. In early 2019 in Field 1, a fence that separated C1 and T1 from the rest of the field was removed. At the same time, a fence was added to Field 1 that subsequently separated C2 and C3 from the other plots. This fence line also split T2 & T3, putting a 2-ft. by 19-ft. strip of each plot on the other side of the fence, the side with C2 and C3. In addition, portions of some plots in Field 1 had temporary electric fencing at different times of year with different grazing animals. And, in 2019 chickens, along with their portable chicken coop were moved through portions of Field 2, including the

C1 and T1. So, those plots did not have consistent management across the entire field. Field 1 was also broadcast seeded with an LA Herne dryland pasture mix in January 2020. There was no irrigation applied to any plots at Property 1.

At Property 2, each treatment plot and control plot was contained in its own separate fenced field. Different from Property 1, control plots at Property 2 were listed as C4, C5, and C6, while treatment plots were labeled as T1, T2, and T3. Plots T2 and C6 were irrigated in 2018. Plots T2 and T3 were irrigated in 2019. Plot T2 was irrigated in 2020. Irrigation occurred one day per week for 4 hours (spaced out at two 2-hour intervals). Irrigation in 2018 and 2019 started in June and was continued through October. In 2020 irrigation began in June and continued through the writing of this article (end of September).

Figure 1. Map of Property 1

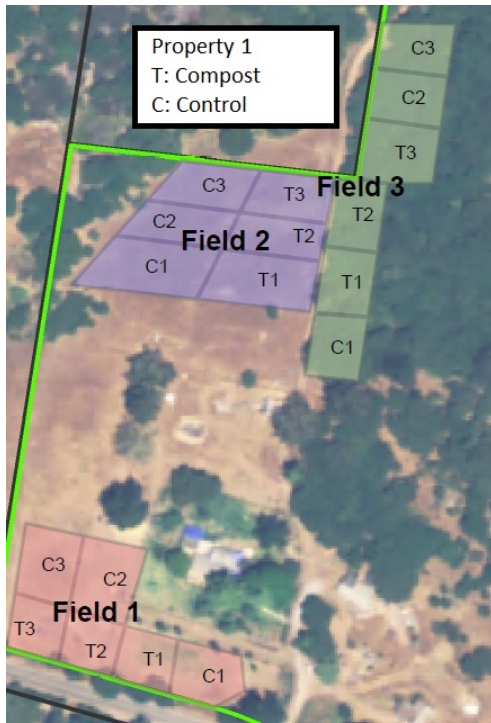
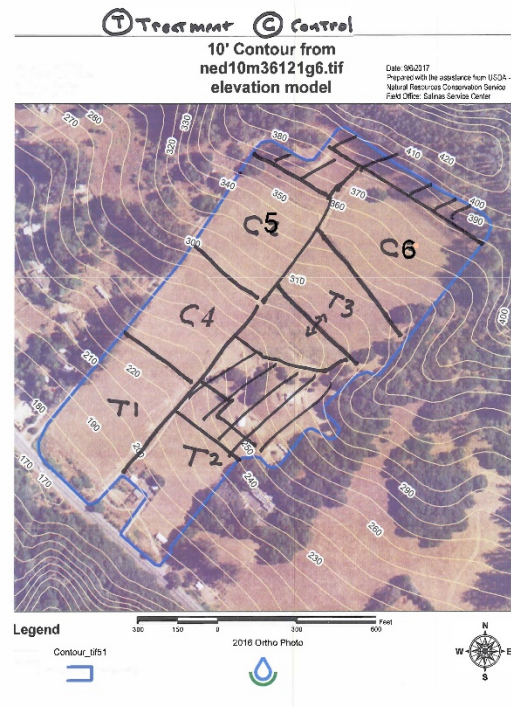


Figure 2. Map of Property 2



There were a lot of different management activities occurring at small scales at the two properties so setting up an appropriate experimental design to examine plant species composition before and after compost addition was not going to be possible. Instead, I made plant lists for the plots over the three years of the project. Site visits to make the plant lists were conducted on 5/18/2018, 5/3/2019, and 4/27/2020. The plant list in 2018 was made prior to the first year of compost application.

At Property 1, plant lists for some plots were combined in Years 1 and 2. Tables 1, 2, and 3 indicate how plots in Fields 1, 2, and 3 were lumped each year. Plots highlighted in yellow indicate plots or plot grouping that were used for more than one year. In Year 3 each plot had a separate plant list. Therefore, it is not possible to compare plant species composition across years for most plots. At Property 2, since each plot was an entire field, each plot had a separate plant species list for all three years of the project.

See Appendix A for tables showing plant lists for both properties for all three years. Plant lists are not comprehensive, but list all common and many less common species in each plot. In the plant list tables, each species is given a subjective “dominance rating” of low, medium, or high cover. In a couple instances a dominance rating was not given. Instead, “Present” is listed in the Dominance column in the tables.

Table 1. Plants lists made for different plots in each year in Field 1 at Property 1

Year	Plants lists made for different plots in each year in Field 1							
2018	C2 & C3	T2& T3						
2019	C2 & C3	T2& T3	C1			T1		
2020			C1	C2	C3	T1	T2	T3

Table 2. Plants lists made for different plots in each year in Field 2 at Property 1

Year	Plants lists made for different plots in each year in Field 2							
2018	C1, C2, C3	T1, T2, T3						
2019	C1, C2, C3	T1, T2, T3						
2020			C1	C2	C3	T1	T2	T3

Table 3. Plants lists made for different plots in each year in Field 3 at Property 1

Year	Plants lists made for different plots in each year in Field 3							
2018	C2 & C3							T3
2019	C2 & C3	C1			T1	T2	T3	
2020		C1	C2	C3	T1	T2	T3	

One benefit of providing plant lists to the landowners in this project was that we were able to alert them to invasive species in their fields. We identified cheatgrass (*Bromus tectorum*) and puncturevine (*Tribulus terrestris*) at Property 2. These are both considered invasive species, with cheatgrass being highly invasive across the west. We were able to notify the landowner, so they are now aware that these species occur on the property and they can begin managing them. The book titled [Weed Control in Natural Areas in the Western United States](#) has information about control options for [cheatgrass](#) and [puncturevine](#).

**REFERENCE**

DiTomaso, J.M., G.B. Kyser et al. 2013. Weed Control in Natural Areas in the Western United States. Weed Research and Information Center, University of California. 544 pp.

Appendix A. Plants lists for Property 1 and Property 2 in 2018, 2019, and 2020

If a plant list for a plot or grouping of plots was made more than one year in a row, they are grouped together below by year.

**Property 1 Field 1**

**Plots C2 & C3**

<b>Plant species list from 2018: Field 1 C2 &amp; C3</b>		
<b>Common Name</b>	<b>Scientific Name</b>	<b>Dominance</b>
Foxtail barley	<i>Hordeum murinum</i>	High
Ripgut brome	<i>Bromus diandrus</i>	High
Cheeseweed	<i>Malva parviflora</i>	Medium
Summer mustard	<i>Hirschfeldia incana</i>	Medium
Whitestem filaree	<i>Erodium moschatum</i>	Medium
Italian rye grass	<i>Festuca perennis</i>	Low
Italian thistle	<i>Carduus pycnocephalus</i>	Low
Poison hemlock	<i>Conium maculatum</i>	Low
Scarlet pimpernel	<i>Lysimachia arvensis</i>	Low
Slender oat	<i>Avena barbata</i>	Low
Stinging nettle	<i>Urtica sp.</i>	Low
Unknown forb	<i>Unknown forb</i>	Low
White horehound	<i>Marrubium vulgare</i>	Low
Wild radish	<i>Raphanus sativus</i>	Low

Plant species list from 2019: Field 1 C2 & C3		
Common Name	Scientific Name	Dominance
Foxtail barley	<i>Hordeum murinum</i>	High
Ripgut brome	<i>Bromus diandrus</i>	High
Summer mustard	<i>Hirschfeldia incana</i>	Low/Medium
Annual blue grass	<i>Poa annua</i>	Low
Cheeseweed	<i>Malva parviflora</i>	Low
Cut leaved geranium	<i>Geranium dissectum</i>	Low
Horseweed	<i>Erigeron canadensis</i>	Low
Italian rye grass	<i>Festuca perennis</i>	Low
Italian thistle	<i>Carduus pycnocephalus</i>	Low
Jersey cudweed	<i>Pseudognaphalium luteoalbum</i>	Low
Narrow leaved clover	<i>Trifolium angustifolium</i>	Low
Poison hemlock	<i>Conium maculatum</i>	Low
Rattail sixweeks grass	<i>Festuca myuros</i>	Low
Rose clover	<i>Trifolium hirtum</i>	Low
Scarlet pimpernel	<i>Lysimachia arvensis</i>	Low
Soft chess	<i>Bromus hordeaceus</i>	Low
Stinging nettle	<i>Urtica sp.</i>	Low
Unknown Brassicaceae	<i>Brassicaceae sp.</i>	Low
Unknown Lupine	<i>Lupinus sp.</i>	Low
White horehound	<i>Marrubium vulgare</i>	Low
Whitestem filaree	<i>Erodium moschatum</i>	Low

**Plots T2 & T3**

<b>Plant species list from 2018: Field 1 T2 &amp; T3</b>		
<b>Common Name</b>	<b>Scientific Name</b>	<b>Dominance</b>
Foxtail barley	<i>Hordeum murinum</i>	High
Ripgut brome	<i>Bromus diandrus</i>	High
Chickweed	<i>Stellaria media</i>	Medium
Italian thistle	<i>Carduus pycnocephalus</i>	Medium
Poison hemlock	<i>Conium maculatum</i>	Medium
Stinging nettle	<i>Urtica sp.</i>	Medium
Summer mustard	<i>Hirschfeldia incana</i>	Medium
Burclover	<i>Medicago polymorpha</i>	Low/Medium
Annual blue grass	<i>Poa annua</i>	Low
Bur chevril	<i>Anthriscus caucalis</i>	Low
Cheeseweed	<i>Malva parviflora</i>	Low
Italian rye grass	<i>Festuca perennis</i>	Low
Little rattlesnake grass	<i>Briza minor</i>	Low
Milk thistle	<i>Silybum marianum</i>	Low
Miner's lettuce	<i>Claytonia sp.</i>	Low
Mouseear chickweed	<i>Cerastium glomeratum</i>	Low
Red stemmed filaree	<i>Erodium cicutarium</i>	Low
Scarlet pimpernel	<i>Lysimachia arvensis</i>	Low
Sheep sorrel	<i>Rumex acetosella</i>	Low
Soft chess	<i>Bromus hordeaceus</i>	Low
Unknown forb	<i>Unknown forb</i>	Low
Upright veldt grass	<i>Ehrharta erecta</i>	Low
Whitestem filaree	<i>Erodium moschatum</i>	Low
Wild radish	<i>Raphanus sativus</i>	Low

<b>Plant species list from 2019: Field 1 T2 &amp; T3</b>		
<b>Common Name</b>	<b>Scientific Name</b>	<b>Dominance</b>
Foxtail barley	<i>Hordeum murinum</i>	High
Ripgut brome	<i>Bromus diandrus</i>	High
Bur chevril	<i>Anthriscus caucalis</i>	Low/Medium
Crane's bill geranium	<i>Geranium molle</i>	Low/Medium
Italian rye grass	<i>Festuca perennis</i>	Low/Medium
Italian thistle	<i>Carduus pycnocephalus</i>	Low/Medium
Poison hemlock	<i>Conium maculatum</i>	Low/Medium
Summer mustard	<i>Hirschfeldia incana</i>	Low/Medium
Annual blue grass	<i>Poa annua</i>	Low
Bird's eye speedwell	<i>Veronica persica</i>	Low
Burclover	<i>Medicago polymorpha</i>	Low
Chickweed	<i>Stellaria media</i>	Low
Cut leaved geranium	<i>Geranium dissectum</i>	Low
Field clover	<i>Trifolium campestre</i>	Low
Hedge mustard	<i>Sisymbrium officinale</i>	Low



Horseweed	<i>Erigeron canadensis</i>	Low
Little rattlesnake grass	<i>Briza minor</i>	Low
Milk thistle	<i>Silybum marianum</i>	Low
Miner's lettuce	<i>Claytonia sp.</i>	Low
Mouseear chickweed	<i>Cerastium glomeratum</i>	Low
Rattail sixweeks grass	<i>Festuca myuros</i>	Low
Rescue grass	<i>Bromus catharticus</i>	Low
Scarlet pimpernel	<i>Lysimachia arvensis</i>	Low
Slender oat	<i>Avena barbata</i>	Low
Soft chess	<i>Bromus hordeaceus</i>	Low
Sow thistle	<i>Sonchus oleraceus</i>	Low
Stinging nettle	<i>Urtica sp.</i>	Low
Subterranean clover	<i>Trifolium subterraneum</i>	Low
Unknown beard grass	<i>Polypogon sp.</i>	Low
White horehound	<i>Marrubium vulgare</i>	Low
Whitestem filaree	<i>Erodium moschatum</i>	Low
Wild radish	<i>Raphanus sativus</i>	Low

#### Plot C1

Plant species list from 2019: Field 1 C1		
Common Name	Scientific Name	Dominance
Wild radish	<i>Raphanus sativus</i>	High
Ripgut brome	<i>Bromus diandrus</i>	Medium
Summer mustard	<i>Hirschfeldia incana</i>	Medium
Foxtail barley	<i>Hordeum murinum</i>	Low/Medium
Italian rye grass	<i>Festuca perennis</i>	Low/Medium
Italian thistle	<i>Carduus pycnocephalus</i>	Low/Medium
Burclover	<i>Medicago polymorpha</i>	Low
Crane's bill geranium	<i>Geranium molle</i>	Low
Cut leaved geranium	<i>Geranium dissectum</i>	Low
Little rattlesnake grass	<i>Briza minor</i>	Low
Longbeak stork's bill	<i>Erodium botrys</i>	Low
Miner's lettuce	<i>Claytonia sp.</i>	Low
Rattail sixweeks grass	<i>Festuca myuros</i>	Low
Scarlet pimpernel	<i>Lysimachia arvensis</i>	Low
Soft chess	<i>Bromus hordeaceus</i>	Low
Stinging nettle	<i>Urtica sp.</i>	Low
Unknown Brassicaceae	<i>Brassicaceae sp.</i>	Low
Unknown pea (Vicia or Lathyrus?)	<i>Fabaceae sp.</i>	Low

Plant species list from 2020: Field 1 C1		
Common Name	Scientific Name	Dominance
Ripgut brome	<i>Bromus diandrus</i>	High
Unknown clover	<i>Trifolium sp.</i>	Medium
Wild radish	<i>Raphanus sativus</i>	Medium
Annual blue grass	<i>Poa annua</i>	Low
Brome fescue	<i>Festuca bromoides</i>	Low
Burclover	<i>Medicago polymorpha</i>	Low
Chickweed	<i>Stellaria media</i>	Low
Common bedstraw	<i>Galium aparine</i>	Low
Crane's bill geranium	<i>Geranium molle</i>	Low
Cut leaved geranium	<i>Geranium dissectum</i>	Low
Foxtail barley	<i>Hordeum murinum</i>	Low
Hedge mustard	<i>Sisymbrium officinale</i>	Low
Italian rye grass	<i>Festuca perennis</i>	Low
Italian thistle	<i>Carduus pycnocephalus</i>	Low
Miner's lettuce	<i>Claytonia sp.</i>	Low
Mouseear chickweed	<i>Cerastium glomeratum</i>	Low
Poison hemlock	<i>Conium maculatum</i>	Low
Rattail sixweeks grass	<i>Festuca myuros</i>	Low
Scarlet pimpernel	<i>Lysimachia arvensis</i>	Low
Slender oat	<i>Avena barbata</i>	Low
Soft chess	<i>Bromus hordeaceus</i>	Low
Whitestem filaree	<i>Erodium moschatum</i>	Low

#### Plot T1

Plant species list from 2019: Field 1 T1		
Common Name	Scientific Name	Dominance
Wild radish	<i>Raphanus sativus</i>	High
Foxtail barley	<i>Hordeum murinum</i>	Medium/High
Italian rye grass	<i>Festuca perennis</i>	Medium/High
Ripgut brome	<i>Bromus diandrus</i>	Medium/High
Chickweed	<i>Stellaria media</i>	Medium
Bur chervil	<i>Anthriscus caucalis</i>	Low/Medium
Poison hemlock	<i>Conium maculatum</i>	Low/Medium
Annual blue grass	<i>Poa annua</i>	Annual blue grass
Burclover	<i>Medicago polymorpha</i>	Burclover
Cut leaved geranium	<i>Geranium dissectum</i>	Cut leaved geranium
Hedge mustard	<i>Sisymbrium officinale</i>	Hedge mustard
Italian thistle	<i>Carduus pycnocephalus</i>	Italian thistle
Miner's lettuce	<i>Claytonia sp.</i>	Miner's lettuce
Scarlet pimpernel	<i>Lysimachia arvensis</i>	Scarlet pimpernel
Unknown sow thistle	<i>Sonchus sp.</i>	Unknown sow thistle
Whitestem filaree	<i>Erodium moschatum</i>	Whitestem filaree



Plant species list from 2020: Field 1 T1		
Common Name	Scientific Name	Dominance
Ripgut brome	<i>Bromus diandrus</i>	High
Foxtail barley	<i>Hordeum murinum</i>	Medium
Wild radish	<i>Raphanus sativus</i>	Medium
Bur chevril	<i>Anthriscus caucalis</i>	Low
Burclover	<i>Medicago polymorpha</i>	Low
Cheeseweed	<i>Malva parviflora</i>	Low
Chickweed	<i>Stellaria media</i>	Low
Cut leaved geranium	<i>Geranium dissectum</i>	Low
Italian rye grass	<i>Festuca perennis</i>	Low
Italian thistle	<i>Carduus pycnocephalus</i>	Low
Milk thistle	<i>Silybum marianum</i>	Low
Miner's lettuce	<i>Claytonia sp.</i>	Low
Mouseear chickweed	<i>Cerastium glomeratum</i>	Low
Poison hemlock	<i>Conium maculatum</i>	Low
Shepherd's purse	<i>Capsella bursa-pastoris</i>	Low
Smooth cats ear	<i>Hypochaeris glabra</i>	Low
Soft chess	<i>Bromus hordeaceus</i>	Low
Unknown Brassicaceae	<i>Brassicaceae sp.</i>	Low
Whitestem filaree	<i>Erodium moschatum</i>	Low

#### Plot C2

Plant species list from 2020: Field 1 C2		
Common Name	Scientific Name	Dominance
Ripgut brome	<i>Bromus diandrus</i>	High
Wild radish	<i>Raphanus sativus</i>	High
Foxtail barley	<i>Hordeum murinum</i>	Medium
Annual blue grass	<i>Poa annua</i>	Low
Burclover	<i>Medicago polymorpha</i>	Low
Chickweed	<i>Stellaria media</i>	Low
Horseweed	<i>Erigeron canadensis</i>	Low
Italian rye grass	<i>Festuca perennis</i>	Low
Longbeak stork's bill	<i>Erodium botrys</i>	Low
Poison hemlock	<i>Conium maculatum</i>	Low
Rattail sixweeks grass	<i>Festuca myuros</i>	Low
Red stemmed filaree	<i>Erodium cicutarium</i>	Low
Scarlet pimpernel	<i>Lysimachia arvensis</i>	Low
Slender oat	<i>Avena barbata</i>	Low
Stinging nettle	<i>Urtica sp.</i>	Low
White horehound	<i>Marrubium vulgare</i>	Low

**Plot C3**

Plant species list from 2020: Field 1 C3		
Common Name	Scientific Name	Dominance
Ripgut brome	<i>Bromus diandrus</i>	High
Wild radish	<i>Raphanus sativus</i>	High
Brome fescue	<i>Festuca bromoides</i>	Low
Foxtail barley	<i>Hordeum murinum</i>	Low
Hedge mustard	<i>Sisymbrium officinale</i>	Low
Italian thistle	<i>Carduus pycnocephalus</i>	Low
Slender oat	<i>Avena barbata</i>	Low
Unknown Brassicaceae	<i>Brassicaceae sp.</i>	Low
White horehound	<i>Marrubium vulgare</i>	Low
Whitestem filaree	<i>Erodium moschatum</i>	Low

**Plot T2**

Plant species list from 2020: Field 1 T2		
Common Name	Scientific Name	Dominance
Foxtail barley	<i>Hordeum murinum</i>	Medium
Ripgut brome	<i>Bromus diandrus</i>	Medium
Wild radish	<i>Raphanus sativus</i>	Medium
Annual blue grass	<i>Poa annua</i>	Low
Bird's eye speedwell	<i>Veronica persica</i>	Low
Brome fescue	<i>Festuca bromoides</i>	Low
Bur chevril	<i>Anthriscus caucalis</i>	Low
Burclover	<i>Medicago polymorpha</i>	Low
Cheeseweed	<i>Malva parviflora</i>	Low
Chickweed	<i>Stellaria media</i>	Low
Crane's bill geranium	<i>Geranium molle</i>	Low
Cut leaved geranium	<i>Geranium dissectum</i>	Low
Italian rye grass	<i>Festuca perennis</i>	Low
Italian thistle	<i>Carduus pycnocephalus</i>	Low
Miner's lettuce	<i>Claytonia sp.</i>	Low
Red stemmed filaree	<i>Erodium cicutarium</i>	Low
Scarlet pimpernel	<i>Lysimachia arvensis</i>	Low
Shepherd's purse	<i>Capsella bursa-pastoris</i>	Low
Slender oat	<i>Avena barbata</i>	Low
Stinging nettle	<i>Urtica sp.</i>	Low
Unknown Brassicaceae	<i>Brassicaceae sp.</i>	Low
Unknown pea (Vicia or Lathryis?)	<i>Fabaceae sp.</i>	Low
Whitestem filaree	<i>Erodium moschatum</i>	Low

## Plot T3

Plant species list from 2020: Field 1 T3		
Common Name	Scientific Name	Dominance
Ripgut brome	<i>Bromus diandrus</i>	High
Wild radish	<i>Raphanus sativus</i>	High
Foxtail barley	<i>Hordeum murinum</i>	Medium
Rattail sixweeks grass	<i>Festuca myuros</i>	Medium
Annual blue grass	<i>Poa annua</i>	Low
Bur chevril	<i>Anthriscus caucalis</i>	Low
Burclover	<i>Medicago polymorpha</i>	Low
Crane's bill geranium	<i>Geranium molle</i>	Low
Cut leaved geranium	<i>Geranium dissectum</i>	Low
Hedge mustard	<i>Sisymbrium officinale</i>	Low
Italian rye grass	<i>Festuca perennis</i>	Low
Italian thistle	<i>Carduus pycnocephalus</i>	Low
Little rattlesnake grass	<i>Briza minor</i>	Low
Miner's lettuce	<i>Claytonia sp.</i>	Low
Mouseear chickweed	<i>Cerastium glomeratum</i>	Low
Red stemmed filaree	<i>Erodium cicutarium</i>	Low
Scarlet pimpernel	<i>Lysimachia arvensis</i>	Low
Soft chess	<i>Bromus hordeaceus</i>	Low
Stinging nettle	<i>Urtica sp.</i>	Low
Unknown pea (Vicia or Lathyrus?)	<i>Fabaceae sp.</i>	Low
White horehound	<i>Marrubium vulgare</i>	Low
Whitestem filaree	<i>Erodium moschatum</i>	Low

## Property 1 Field 2

### Plots C1, C2, C3

Plant species list from 2018: Field 2 C1, C2, C3		
Common Name	Scientific Name	Dominance
Ripgut brome	<i>Bromus diandrus</i>	High
Foxtail barley	<i>Hordeum murinum</i>	Medium
Longbeak stork's bill	<i>Erodium botrys</i>	Medium
California coffeeberry	<i>Frangula californica</i>	Low
California sagebrush	<i>Artemisia californica</i>	Low
Common catchfly	<i>Silene gallica</i>	Low
Crane's bill geranium	<i>Geranium molle</i>	Low
Italian rye grass	<i>Festuca perennis</i>	Low
Italian thistle	<i>Carduus pycnocephalus</i>	Low
Mouseear chickweed	<i>Cerastium glomeratum</i>	Low
Narrow leaved clover	<i>Trifolium angustifolium</i>	Low

Narrowleaf cottonrose	<i>Logfia gallica</i>	Low
Rattlesnake grass	<i>Briza maxima</i>	Low
Rose clover	<i>Trifolium hirtum</i>	Low
Scarlet pimpernel	<i>Lysimachia arvensis</i>	Low
Sheep sorrel	<i>Rumex acetosella</i>	Low
Slender oat	<i>Avena barbata</i>	Low
Smooth cats ear	<i>Hypochaeris glabra</i>	Low
Soft chess	<i>Bromus hordeaceus</i>	Low
Spring vetch	<i>Vicia sativa</i>	Low
Summer mustard	<i>Hirschfeldia incana</i>	Low
Unknown vetch	<i>Vicia sp.</i>	Low
Unknwon shrub	<i>Unknown shrub</i>	Low
Watson's wild cucumber	<i>Marah watsonii</i>	Low

<b>Plant species list from 2019: Field 2 C1, C2, C3</b>		
<b>Common Name</b>	<b>Scientific Name</b>	<b>Dominance</b>
Ripgut brome	<i>Bromus diandrus</i>	High
Foxtail barley	<i>Hordeum murinum</i>	Low/Medium
Rattail sixweeks grass	<i>Festuca myuros</i>	Low/Medium
Slender oat	<i>Avena barbata</i>	Low/Medium
Smooth cats ear	<i>Hypochaeris glabra</i>	Low/Medium
Burclover	<i>Medicago polymorpha</i>	Low
Common catchfly	<i>Silene gallica</i>	Low
Horseweed	<i>Erigeron canadensis</i>	Low
Italian thistle	<i>Carduus pycnocephalus</i>	Low
Longbeak stork's bill	<i>Erodium botrys</i>	Low
Narrow leaved clover	<i>Trifolium angustifolium</i>	Low
Narrowleaf cottonrose	<i>Logfia gallica</i>	Low
Rose clover	<i>Trifolium hirtum</i>	Low
Scarlet pimpernel	<i>Lysimachia arvensis</i>	Low
Sheep sorrel	<i>Rumex acetosella</i>	Low
Soft chess	<i>Bromus hordeaceus</i>	Low
Unknown Lupine	<i>Lupinus sp.</i>	Low
White horehound	<i>Marrubium vulgare</i>	Low

### Plots T1, T2, T3

Plant species list from 2018: Field 2 T1, T2, T3		
Common Name	Scientific Name	Dominance
Ripgut brome	<i>Bromus diandrus</i>	High
Foxtail barley	<i>Hordeum murinum</i>	Medium
Slender oat	<i>Avena barbata</i>	Medium
Longbeak stork's bill	<i>Erodium botrys</i>	Low/Medium
Common catchfly	<i>Silene gallica</i>	Low
Italian rye grass	<i>Festuca perennis</i>	Low
Italian thistle	<i>Carduus pycnocephalus</i>	Low
Moroccan toad flax	<i>Linaria maroccana</i>	Low
Rattail sixweeks grass	<i>Festuca myuros</i>	Low
Rattlesnake grass	<i>Briza maxima</i>	Low
Rose clover	<i>Trifolium hirtum</i>	Low
Summer mustard	<i>Hirschfeldia incana</i>	Low

Plant species list from 2019: Field 2 T1, T2, T3		
Common Name	Scientific Name	Dominance
Ripgut brome	<i>Bromus diandrus</i>	High
Slender oat	<i>Avena barbata</i>	Medium
Smooth cats ear	<i>Hypochaeris glabra</i>	Low/Medium
Foxtail barley	<i>Hordeum murinum</i>	Low
Italian rye grass	<i>Festuca perennis</i>	Low
Italian thistle	<i>Carduus pycnocephalus</i>	Low
Longbeak stork's bill	<i>Erodium botrys</i>	Low
Moroccan toad flax	<i>Linaria maroccana</i>	Low
Narrowleaf cottonrose	<i>Logfia gallica</i>	Low
Rattail sixweeks grass	<i>Festuca myuros</i>	Low
Rose clover	<i>Trifolium hirtum</i>	Low
Scarlet pimpernel	<i>Lysimachia arvensis</i>	Low
Soft chess	<i>Bromus hordeaceus</i>	Low
Stinging nettle	<i>Urtica sp.</i>	Low
Unknown Lupine	Lupinus sp.	Low

### Plot C1

Plant species list from 2020: Field 2 C1		
Common Name	Scientific Name	Dominance
Ripgut brome	<i>Bromus diandrus</i>	High
Foxtail barley	<i>Hordeum murinum</i>	Medium
Wild radish	<i>Raphanus sativus</i>	Medium
Horseweed	<i>Erigeron canadensis</i>	Low

Italian rye grass	<i>Festuca perennis</i>	Low
Italian thistle	<i>Carduus pycnocephalus</i>	Low
Longbeak stork's bill	<i>Erodium botrys</i>	Low
Narrowleaf cottonrose	<i>Logfia gallica</i>	Low
Rattail sixweeks grass	<i>Festuca myuros</i>	Low
Rose clover	<i>Trifolium hirtum</i>	Low
Scarlet pimpernel	<i>Lysimachia arvensis</i>	Low
Sheep sorrel	<i>Rumex acetosella</i>	Low
Slender oat	<i>Avena barbata</i>	Low
Smooth cats ear	<i>Hypochaeris glabra</i>	Low
Soft chess	<i>Bromus hordeaceus</i>	Low

### Plot C2

Plant species list from 2020: Field 2 C2		
Common Name	Scientific Name	Dominance
Ripgut brome	<i>Bromus diandrus</i>	High
Longbeak stork's bill	<i>Erodium botrys</i>	Medium
Creeping wood sorrel	<i>Oxalis corniculata</i>	Low
Hedge mustard	<i>Sisymbrium officinale</i>	Low
Horseweed	<i>Erigeron canadensis</i>	Low
Italian thistle	<i>Carduus pycnocephalus</i>	Low
Jersey cudweed	<i>Pseudognaphalium luteoalbum</i>	Low
Narrowleaf cottonrose	<i>Logfia gallica</i>	Low
Rattail sixweeks grass	<i>Festuca myuros</i>	Low
Rose clover	<i>Trifolium hirtum</i>	Low
Scarlet pimpernel	<i>Lysimachia arvensis</i>	Low
Sheep sorrel	<i>Rumex acetosella</i>	Low
Slender oat	<i>Avena barbata</i>	Low
Smooth cats ear	<i>Hypochaeris glabra</i>	Low
Soft chess	<i>Bromus hordeaceus</i>	Low
Telegraph weed	<i>Heterotheca grandiflora</i>	Low
Wild radish	<i>Raphanus sativus</i>	Low

### Plot C3

Plant species list from 2020: Field 2 C3		
Common Name	Scientific Name	Dominance
Ripgut brome	<i>Bromus diandrus</i>	High
Burclover	<i>Medicago polymorpha</i>	Low
Creeping wood sorrel	<i>Oxalis corniculata</i>	Low
Horseweed	<i>Erigeron canadensis</i>	Low

Longbeak stork's bill	<i>Erodium botrys</i>	Low
Narrow leaved clover	<i>Trifolium angustifolium</i>	Low
Scarlet pimpernel	<i>Lysimachia arvensis</i>	Low
Sheep sorrel	<i>Rumex acetosella</i>	Low
Slender oat	<i>Avena barbata</i>	Low
Smooth cats ear	<i>Hypochaeris glabra</i>	Low
Telegraph weed	<i>Heterotheca grandiflora</i>	Low
Unknown Lupine	<i>Lupinus sp.</i>	Low
Watson's wild cucumber	<i>Marah watsonii</i>	Low
Wild radish	<i>Raphanus sativus</i>	Low

### Plot T1

Plant species list from 2020: Field 2 T1		
Common Name	Scientific Name	Dominance
Ripgut brome	<i>Bromus diandrus</i>	High
Foxtail barley	<i>Hordeum murinum</i>	Low/Medium
Longbeak stork's bill	<i>Erodium botrys</i>	Low/Medium
Common catchfly	<i>Silene gallica</i>	Low
Horseweed	<i>Erigeron canadensis</i>	Low
Italian thistle	<i>Carduus pycnocephalus</i>	Low
Rattail sixweeks grass	<i>Festuca myuros</i>	Low
Rose clover	<i>Trifolium hirtum</i>	Low
Scarlet pimpernel	<i>Lysimachia arvensis</i>	Low
Sheep sorrel	<i>Rumex acetosella</i>	Low
Slender oat	<i>Avena barbata</i>	Low
Soft chess	<i>Bromus hordeaceus</i>	Low
White horehound	<i>Marrubium vulgare</i>	Low
Wild radish	<i>Raphanus sativus</i>	Low

### Plot T2

Plant species list from 2020: Field 2 T2		
Common Name	Scientific Name	Dominance
Ripgut brome	<i>Bromus diandrus</i>	High
Sheep sorrel	<i>Rumex acetosella</i>	Low/Medium
Brome fescue	<i>Festuca bromoides</i>	Low
Burclover	<i>Medicago polymorpha</i>	Low
Foxtail barley	<i>Hordeum murinum</i>	Low
Horseweed	<i>Erigeron canadensis</i>	Low
Italian thistle	<i>Carduus pycnocephalus</i>	Low
Longbeak stork's bill	<i>Erodium botrys</i>	Low
Scarlet pimpernel	<i>Lysimachia arvensis</i>	Low
Unknown forb	<i>Unknown forb</i>	Low



Unknown Pseudognaphalium	<i>Pseudognaphalium sp.</i>	Low
Wild radish	<i>Raphanus sativus</i>	Low

### Plot T3

Plant species list from 2020: Field 2 T3		
Common Name	Scientific Name	Dominance
Ripgut brome	<i>Bromus diandrus</i>	High
Burclover	<i>Medicago polymorpha</i>	Low
Common catchfly	<i>Silene gallica</i>	Low
Longbeak stork's bill	<i>Erodium botrys</i>	Low
Moroccan toad flax	<i>Linaria maroccana</i>	Low
Rose clover	<i>Trifolium hirtum</i>	Low
Scarlet pimpernel	<i>Lysimachia arvensis</i>	Low
Slender oat	<i>Avena barbata</i>	Low
Smooth cats ear	<i>Hypochaeris glabra</i>	Low
Unknown Lupine	<i>Lupinus sp.</i>	Low

### Property 1 Field 3

#### Plots C2 & C3

Plant species list from 2018: Field 3 C2&C3		
Common Name	Scientific Name	Dominance
Italian thistle	<i>Carduus pycnocephalus</i>	Medium/High
Poison oak	<i>Toxicodendron diversilobum</i>	Medium/High
Rattlesnake grass	<i>Briza maxima</i>	Medium/High
Bedstraw	<i>Galium sp.</i>	Low/Medium
California blackberry	<i>Rubus ursinus</i>	Low/Medium
Hedge nettle	<i>Stachys sp.</i>	Low/Medium
Ripgut brome	<i>Bromus diandrus</i>	Low/Medium
Upright veldt grass	<i>Ehrharta erecta</i>	Low/Medium
Crane's bill geranium	<i>Geranium molle</i>	Low
Creeping snowberry	<i>Symphoricarpos mollis</i>	Low
English plantain	<i>Plantago lanceolata</i>	Low
Four leaved allseed	<i>Polycarpon tetraphyllum var. tetraphyllum</i>	Low
Hairy cats ear	<i>Hypochaeris radicata</i>	Low
Hedge mustard	<i>Sisymbrium officinale</i>	Low
Narrow leaved clover	<i>Trifolium angustifolium</i>	Low
Sheep sorrel	<i>Rumex acetosella</i>	Low

Small flowered nightshade	<i>Solanum americanum</i>	Low
Unknown fern	<i>Unknown fern</i>	Low
Unknown monkeyflower	<i>Unknown monkeyflower</i>	Low
Unknown woodsorrel	<i>Oxalis sp.</i>	Low
Unknwon shrub	<i>Unknown shrub</i>	Low

Plant species list from 2019: Field 3 C2&C3		
Common Name	Scientific Name	Dominance
Poison oak	<i>Toxicodendron diversilobum</i>	Medium/High
Unknown grass	<i>Unknown grass</i>	Medium/High
Hedge nettle	<i>Stachys sp.</i>	Medium
Ripgut brome	<i>Bromus diandrus</i>	Medium
Upright veldt grass	<i>Ehrharta erecta</i>	Low/Medium
California blackberry	<i>Rubus ursinus</i>	Low
Common bedstraw	<i>Galium aparine</i>	Low
Creeping snowberry	<i>Symphoricarpos mollis</i>	Low
Creeping wood sorrel	<i>Oxalis corniculata</i>	Low
Deerweed	<i>Acmispon glaber var. glaber</i>	Low
English plantain	<i>Plantago lanceolata</i>	Low
Foxtail barley	<i>Hordeum murinum</i>	Low
Hairy cats ear	<i>Hypochaeris radicata</i>	Low
Italian thistle	<i>Carduus pycnocephalus</i>	Low
Narrow leaved clover	<i>Trifolium angustifolium</i>	Low
Rose clover	<i>Trifolium hirtum</i>	Low
Scarlet pimpernel	<i>Lysimachia arvensis</i>	Low
Sheep sorrel	<i>Rumex acetosella</i>	Low
Slender oat	<i>Avena barbata</i>	Low
Smooth cats ear	<i>Hypochaeris glabra</i>	Low
Soft chess	<i>Bromus hordeaceus</i>	Low
Unknown fern	<i>Unknown fern</i>	Low
Unknown sow thistle	<i>Sonchus sp.</i>	Low
Yerba buena	<i>Clinopodium douglasii</i>	Low

### Plot T3

Plant species list from 2018: Field 3 T3		
Common Name	Scientific Name	Dominance
Italian thistle	<i>Carduus pycnocephalus</i>	High
Bedstraw	<i>Galium sp.</i>	Medium
Crane's bill geranium	<i>Geranium molle</i>	Medium
Hedge nettle	<i>Stachys sp.</i>	Medium

Mouseear chickweed	<i>Cerastium glomeratum</i>	Medium
Poison oak	<i>Toxicodendron diversilobum</i>	Medium
Ripgut brome	<i>Bromus diandrus</i>	Medium
Small flowered nightshade	<i>Solanum americanum</i>	Medium
Unknown grass	<i>Unknown grass</i>	Medium
California blackberry	<i>Rubus ursinus</i>	Low/Medium
California coffeeberry	<i>Frangula californica</i>	Low
Foxtail barley	<i>Hordeum murinum</i>	Low
Miner's lettuce	<i>Claytonia sp.</i>	Low
Rattlesnake grass	<i>Briza maxima</i>	Low
Toyon	<i>Heteromeles arbutifolia</i>	Low
Unknown fern	<i>Unknown fern</i>	Low
Unknown forb	<i>Unknown forb</i>	Low
Unknown goldenrod	<i>Solidago sp.</i>	Low
Unknown woodsorrel	<i>Oxalis sp.</i>	Low
Upright veldt grass	<i>Ehrharta erecta</i>	Low
Watson's wild cucumber	<i>Marah watsonii</i>	Low

Plant species list from 2019: F3 T3		
Common Name	Scientific Name	Dominance
Creeping wood sorrel	<i>Oxalis corniculata</i>	Medium
Miner's lettuce	<i>Claytonia sp.</i>	Medium
Poison oak	<i>Toxicodendron diversilobum</i>	Medium
Ripgut brome	<i>Bromus diandrus</i>	Medium
Upright veldt grass	<i>Ehrharta erecta</i>	Medium
Unknown Solanum	<i>Solanum sp.</i>	Low/Medium
Bur chevril	<i>Anthriscus caucalis</i>	Low
California blackberry	<i>Rubus ursinus</i>	Low
Common bedstraw	<i>Galium aparine</i>	Low
Crane's bill geranium	<i>Geranium molle</i>	Low
Hedge nettle	<i>Stachys sp.</i>	Low
Italian thistle	<i>Carduus pycnocephalus</i>	Low
Slender oat	<i>Avena barbata</i>	Low
Soft chess	<i>Bromus hordeaceus</i>	Low
Unknown fern	<i>Unknown fern</i>	Low
Unknown grass	<i>Unknown grass</i>	Low
Watson's wild cucumber	<i>Marah watsonii</i>	Low

**Plot C1**

<b>Plant species list from 2019: F3 C1</b>		
<b>Common Name</b>	<b>Scientific Name</b>	<b>Dominance</b>
Poison oak	<i>Toxicodendron diversilobum</i>	Medium
Ripgut brome	<i>Bromus diandrus</i>	Medium
Upright veldt grass	<i>Ehrharta erecta</i>	Medium
Bur chevril	<i>Anthriscus caucalis</i>	Low
California blackberry	<i>Rubus ursinus</i>	Low
Chickweed	<i>Stellaria media</i>	Low
Common bedstraw	<i>Galium aparine</i>	Low
Creeping snowberry	<i>Symphoricarpos mollis</i>	Low
Hedge nettle	<i>Stachys sp.</i>	Low
Italian thistle	<i>Carduus pycnocephalus</i>	Low
Miner's lettuce	<i>Claytonia sp.</i>	Low
Poison hemlock	<i>Conium maculatum</i>	Low
Stinging nettle	<i>Urtica sp.</i>	Low
Unknown fern	<i>Unknown fern</i>	Low
Watson's wild cucumber	<i>Marah watsonii</i>	Low

<b>Plant species list from 2020: F3 C1</b>		
<b>Common Name</b>	<b>Scientific Name</b>	<b>Dominance</b>
Hedge nettle	<i>Stachys sp.</i>	Medium
Poison oak	<i>Toxicodendron diversilobum</i>	Medium
Upright veldt grass	<i>Ehrharta erecta</i>	Medium
Bur chevril	<i>Anthriscus caucalis</i>	Low
California blackberry	<i>Rubus ursinus</i>	Low
Common bedstraw	<i>Galium aparine</i>	Low
Crane's bill geranium	<i>Geranium molle</i>	Low
Italian thistle	<i>Carduus pycnocephalus</i>	Low
Ripgut brome	<i>Bromus diandrus</i>	Low
Sheep sorrel	<i>Rumex acetosella</i>	Low
Unknown fern	<i>Unknown fern</i>	Low

**Plot T1**

Plant species list from 2019: F3 T1		
Common Name	Scientific Name	Dominance
Italian thistle	<i>Carduus pycnocephalus</i>	High
Ripgut brome	<i>Bromus diandrus</i>	Medium
Chickweed	<i>Stellaria media</i>	Low/Medium
Miner's lettuce	<i>Claytonia sp.</i>	Low/Medium
Common bedstraw	<i>Galium aparine</i>	Low
Crane's bill geranium	<i>Geranium molle</i>	Low
Hedge nettle	<i>Stachys sp.</i>	Low
Milk thistle	<i>Silybum marianum</i>	Low
Poison hemlock	<i>Conium maculatum</i>	Low
Poison oak	<i>Toxicodendron diversilobum</i>	Low
Scarlet pimpernel	<i>Lysimachia arvensis</i>	Low
Unknown Sinapis	<i>Sinapis sp.</i>	Low
Watson's wild cucumber	<i>Marah watsonii</i>	Low
Western bracken fern	<i>Pteridium aquilinum var. pubescens</i>	Low

Plant species list from 2020: F3 T1		
Common Name	Scientific Name	Dominance
Ripgut brome	<i>Bromus diandrus</i>	High
Chickweed	<i>Stellaria media</i>	Low/Medium
Brome fescue	<i>Festuca bromoides</i>	Low
Common bedstraw	<i>Galium aparine</i>	Low
Crane's bill geranium	<i>Geranium molle</i>	Low
Foxtail barley	<i>Hordeum murinum</i>	Low
Hedge nettle	<i>Stachys sp.</i>	Low
Italian thistle	<i>Carduus pycnocephalus</i>	Low
Miner's lettuce	<i>Claytonia sp.</i>	Low
Poison hemlock	<i>Conium maculatum</i>	Low
Poison oak	<i>Toxicodendron diversilobum</i>	Low
Sheep sorrel	<i>Rumex acetosella</i>	Low
Slender oat	<i>Avena barbata</i>	Low
Unknown fern	<i>Unknown fern</i>	Low
Watson's wild cucumber	<i>Marah watsonii</i>	Low

**Plot T2**

<b>Plant species list from 2019: F3 T2</b>		
<b>Common Name</b>	<b>Scientific Name</b>	<b>Dominance</b>
Italian thistle	<i>Carduus pycnocephalus</i>	High
Poison oak	<i>Toxicodendron diversilobum</i>	Medium/High
Ripgut brome	<i>Bromus diandrus</i>	Medium
Common bedstraw	<i>Galium aparine</i>	Low/Medium
Miner's lettuce	<i>Claytonia sp.</i>	Low/Medium
Bur chevril	<i>Anthriscus caucalis</i>	Low
Burclover	<i>Medicago polymorpha</i>	Low
Foxtail barley	<i>Hordeum murinum</i>	Low
Hedge nettle	<i>Stachys sp.</i>	Low
Narrow leaved clover	<i>Trifolium angustifolium</i>	Low
Narrowleaf cottonrose	<i>Logfia gallica</i>	Low
Rattail sixweeks grass	<i>Festuca myuros</i>	Low
Rattlesnake grass	<i>Briza maxima</i>	Low
Rose clover	<i>Trifolium hirtum</i>	Low
Sheep sorrel	<i>Rumex acetosella</i>	Low
Slender oat	<i>Avena barbata</i>	Low
Stinging nettle	<i>Urtica sp.</i>	Low
Unknown fern	<i>Unknown fern</i>	Low
Unknown sow thistle	<i>Sonchus sp.</i>	Low
Upright veldt grass	<i>Ehrharta erecta</i>	Low
Watson's wild cucumber	<i>Marah watsonii</i>	Low
Wild radish	<i>Raphanus sativus</i>	Low

<b>Plant species list from 2020: F3 T2</b>		
<b>Common Name</b>	<b>Scientific Name</b>	<b>Dominance</b>
Ripgut brome	<i>Bromus diandrus</i>	Medium High
Italian thistle	<i>Carduus pycnocephalus</i>	Low/Medium
Common bedstraw	<i>Galium aparine</i>	Low
Hedge nettle	<i>Stachys sp.</i>	Low
Poison oak	<i>Toxicodendron diversilobum</i>	Low
Unknown fern	<i>Unknown fern</i>	Low
Unknown sow thistle	<i>Sonchus sp.</i>	Low
Upright veldt grass	<i>Ehrharta erecta</i>	Low
Watson's wild cucumber	<i>Marah watsonii</i>	Low

## Plot C2

Plant species list from 2020: F3 C2		
Common Name	Scientific Name	Dominance
Poison oak	<i>Toxicodendron diversilobum</i>	Low/Medium
Ripgut brome	<i>Bromus diandrus</i>	Low/Medium
Unknown grass	<i>Unknown grass</i>	Low/Medium
Upright veldt grass	<i>Ehrharta erecta</i>	Low/Medium
Common bedstraw	<i>Galium aparine</i>	Low
Crane's bill geranium	<i>Geranium molle</i>	Low
Deerweed	<i>Acmispon glaber var. glaber</i>	Low
Hedge nettle	<i>Stachys sp.</i>	Low
Miner's lettuce	<i>Claytonia sp.</i>	Low
Narrow leaved clover	<i>Trifolium angustifolium</i>	Low
Peak Rushrose	<i>Crocانthemum scoparium var. vulgare</i>	Low
Sheep sorrel	<i>Rumex acetosella</i>	Low
Soft chess	<i>Bromus hordeaceus</i>	Low
Sourgrass	<i>Oxalis pes-caprae</i>	Low
Unknown fern	<i>Unknown fern</i>	Low
Unknown forb	<i>Unknown forb</i>	Low

## Plot C3

Plant species list from 2020: F3 C3		
Common Name	Scientific Name	Dominance
Unknown grass	<i>Unknown grass</i>	High
California blackberry	<i>Rubus ursinus</i>	Medium
Hedge nettle	<i>Stachys sp.</i>	Medium
Poison oak	<i>Toxicodendron diversilobum</i>	Medium
Unknown fern	<i>Unknown fern</i>	Medium
Ripgut brome	<i>Bromus diandrus</i>	Low/Medium
Chickweed	<i>Stellaria media</i>	Low
Common bedstraw	<i>Galium aparine</i>	Low
Common catchfly	<i>Silene gallica</i>	Low
Hairy cats ear	<i>Hypochaeris radicata</i>	Low
Italian thistle	<i>Carduus pycnocephalus</i>	Low
Miner's lettuce	<i>Claytonia sp.</i>	Low
Sheep sorrel	<i>Rumex acetosella</i>	Low
Sourgrass	<i>Oxalis pes-caprae</i>	Low
Unknown forb	<i>Unknown forb</i>	Low
Upright veldt grass	<i>Ehrharta erecta</i>	Low



## Plot T3

Plant species list from 2020: F3 T3		
Common Name	Scientific Name	Dominance
Ripgut brome	<i>Bromus diandrus</i>	High
Miner's lettuce	<i>Claytonia sp.</i>	Medium
Poison oak	<i>Toxicodendron diversilobum</i>	Medium
Upright veldt grass	<i>Ehrharta erecta</i>	Low/Medium
Chickweed	<i>Stellaria media</i>	Low
Common bedstraw	<i>Galium aparine</i>	Low
Crane's bill geranium	<i>Geranium molle</i>	Low
Foxtail barley	<i>Hordeum murinum</i>	Low
Hedge nettle	<i>Stachys sp.</i>	Low
Italian thistle	<i>Carduus pycnocephalus</i>	Low
Sheep sorrel	<i>Rumex acetosella</i>	Low
Slender oat	<i>Avena barbata</i>	Low
Small flowered nightshade	<i>Solanum americanum</i>	Low
Sourgrass	<i>Oxalis pes-caprae</i>	Low
Unknown fern	<i>Unknown fern</i>	Low
Unknown sow thistle	<i>Sonchus sp.</i>	Low
Watson's wild cucumber	<i>Marah watsonii</i>	Low

## Property 2

### Plot C4

Plant species list from 2018: C4		
Common Name	Scientific Name	Dominance
Slender oat	<i>Avena barbata</i>	High
Ripgut brome	<i>Bromus diandrus</i>	Medium
Cheatgrass	<i>Bromus tectorum</i>	Low/Medium
Foxtail barley	<i>Hordeum murinum</i>	Low/Medium
Italian thistle	<i>Carduus pycnocephalus</i>	Low/Medium
Longbeak stork's bill	<i>Erodium botrys</i>	Low/Medium
Red stemmed filaree	<i>Erodium cicutarium</i>	Low/Medium
Unknown Hypochaeris	<i>Hypochaeris sp.</i>	Low/Medium
Burclover	<i>Medicago polymorpha</i>	Low
Cheeseweed	<i>Malva parviflora</i>	Low
False brome	<i>Brachypodium distachyon</i>	Low
Horseweed	<i>Erigeron canadensis</i>	Low
Italian rye grass	<i>Festuca perennis</i>	Low

Jersey cudweed	<i>Pseudognaphalium luteoalbum</i>	Low
Lesser swine cress	<i>Lepidium didymum</i>	Low
Narrowleaf cottonrose	<i>Logfia gallica</i>	Low
Prostrate knotweed	<i>Polygonum aviculare</i>	Low
Puncture vine	<i>Tribulus terrestris</i>	Low
Rattail sixweeks grass	<i>Festuca myuros</i>	Low
Sheep sorrel	<i>Rumex acetosella</i>	Low
Shepherd's purse	<i>Capsella bursa-pastoris</i>	Low
Soft chess	<i>Bromus hordeaceus</i>	Low
Stinging nettle	<i>Urtica sp.</i>	Low
Summer mustard	<i>Hirschfeldia incana</i>	Low
Unknown Chenopodium	<i>Chenopodium sp.</i>	Low
Unknown forb	<i>Unknown forb</i>	Low
Unknown grass	<i>Unknown grass</i>	Low
Unknown Lupine	<i>Lupinus sp.</i>	Low
Unknown mallow	<i>Malacothamnus sp.</i>	Low
Unknown sow thistle	<i>Sonchus sp.</i>	Low
Whitestem filaree	<i>Erodium moschatum</i>	Low

Plant species list from 2019: C4		
Common Name	Scientific Name	Dominance
Rattail sixweeks grass	<i>Festuca myuros</i>	High
Ripgut brome	<i>Bromus diandrus</i>	Medium/High
Foxtail barley	<i>Hordeum murinum</i>	Medium
Burclover	<i>Medicago polymorpha</i>	Low/Medium
Slender oat	<i>Avena barbata</i>	Low/Medium
Smooth cats ear	<i>Hypochaeris glabra</i>	Low/Medium
Cheatgrass	<i>Bromus tectorum</i>	Low
Italian thistle	<i>Carduus pycnocephalus</i>	Low
Longbeak stork's bill	<i>Erodium botrys</i>	Low
Narrowleaf cottonrose	<i>Logfia gallica</i>	Low
Soft chess	<i>Bromus hordeaceus</i>	Low
Summer mustard	<i>Hirschfeldia incana</i>	Low
Unknown Lupine	<i>Lupinus sp.</i>	Low
Unknown Pseudognaphalium (I'm calling queen anne's lace)	<i>Pseudognaphalium sp.</i>	Low
Whitestem filaree	<i>Erodium moschatum</i>	Low

Plant species list from 2020: C4		
Common Name	Scientific Name	Dominance
Rattail sixweeks grass	<i>Festuca myuros</i>	Medium/High

Smooth cats ear	<i>Hypochaeris glabra</i>	Medium
Whitstem filaree	<i>Erodium moschatum</i>	Medium
Ripgut brome	<i>Bromus diandrus</i>	Low/Medium
Burclover	<i>Medicago polymorpha</i>	Low
Cheatgrass	<i>Bromus tectorum</i>	Low
Foxtail barley	<i>Hordeum murinum</i>	Low
Italian thistle	<i>Carduus pycnocephalus</i>	Low
Longbeak stork's bill	<i>Erodium botrys</i>	Low
Narrowleaf cottonrose	<i>Logfia gallica</i>	Low
Red stemmed filaree	<i>Erodium cicutarium</i>	Low
Rose clover	<i>Trifolium hirtum</i>	Low
Shepherd's purse	<i>Capsella bursa-pastoris</i>	Low
Slender oat	<i>Avena barbata</i>	Low
Soft chess	<i>Bromus hordeaceus</i>	Low
Summer mustard	<i>Hirschfeldia incana</i>	Low
Unknown forb	<i>Unknown forb</i>	Low
Unknown Pseudognaphalium	<i>Pseudognaphalium sp.</i>	Low

#### Plot C5

Plant species list from 2018: C5		
Common Name	Scientific Name	Dominance
Ripgut brome	<i>Bromus diandrus</i>	High
Slender oat	<i>Avena barbata</i>	High
Italian rye grass	<i>Festuca perennis</i>	Medium
Cheatgrass	<i>Bromus tectorum</i>	Low/Medium
Crane's bill geranium	<i>Geranium molle</i>	Low/Medium
Longbeak stork's bill	<i>Erodium botrys</i>	Low/Medium
Unknown Hypochaeris	<i>Hypochaeris sp.</i>	Low/Medium
Burclover	<i>Medicago polymorpha</i>	Low
Cheeseweed	<i>Malva parviflora</i>	Low
Creeping wood sorrel	<i>Oxalis corniculata</i>	Low
English plantain	<i>Plantago lanceolata</i>	Low
Foxtail barley	<i>Hordeum murinum</i>	Low
Horseweed	<i>Erigeron canadensis</i>	Low
Italian thistle	<i>Carduus pycnocephalus</i>	Low
Jersey cudweed	<i>Pseudognaphalium luteoalbum</i>	Low
Narrow leaved clover	<i>Trifolium angustifolium</i>	Low
Poison oak	<i>Toxicodendron diversilobum</i>	Low
Prostrate knotweed	<i>Polygonum aviculare</i>	Low
Rattail sixweeks grass	<i>Festuca myuros</i>	Low
Red stemmed filaree	<i>Erodium cicutarium</i>	Low

Rose clover	<i>Trifolium hirtum</i>	Low
Soft chess	<i>Bromus hordeaceus</i>	Low
Summer mustard	<i>Hirschfeldia incana</i>	Low
Unknown forb	<i>Unknown forb</i>	Low
Unknown Lupine	<i>Lupinus sp.</i>	Low
Unknown sow thistle	<i>Sonchus sp.</i>	Low

Plant species list from 2019: C5		
Common Name	Scientific Name	Dominance
Burclover	<i>Medicago polymorpha</i>	High
Rattail sixweeks grass	<i>Festuca myuros</i>	High
Ripgut brome	<i>Bromus diandrus</i>	Medium
Smooth cats ear	<i>Hypochaeris glabra</i>	Medium
Longbeak stork's bill	<i>Erodium botrys</i>	Low/Medium
Rose clover	<i>Trifolium hirtum</i>	Low/Medium
Slender oat	<i>Avena barbata</i>	Low/Medium
Cheatgrass	<i>Bromus tectorum</i>	Low
Foxtail barley	<i>Hordeum murinum</i>	Low
Horseweed	<i>Erigeron canadensis</i>	Low
Italian thistle	<i>Carduus pycnocephalus</i>	Low
Narrow leaved clover	<i>Trifolium angustifolium</i>	Low
Summer mustard	<i>Hirschfeldia incana</i>	Low
Unknown Lupine	<i>Lupinus sp.</i>	Low
Unknown Pseudognaphalium (I'm calling queen anne's lace)	<i>Pseudognaphalium sp.</i>	Low
Unknown sow thistle	<i>Sonchus sp.</i>	Low
Whitestem filaree	<i>Erodium moschatum</i>	Low

Plant species list from 2020: C5		
Common Name	Scientific Name	Dominance
Burclover	<i>Medicago polymorpha</i>	Present
Common catchfly	<i>Silene gallica</i>	Present
English plantain	<i>Plantago lanceolata</i>	Present
Foxtail barley	<i>Hordeum murinum</i>	Present
Longbeak stork's bill	<i>Erodium botrys</i>	Present
Rattail sixweeks grass	<i>Festuca myuros</i>	Present
Ripgut brome	<i>Bromus diandrus</i>	Present
Rose clover	<i>Trifolium hirtum</i>	Present
Sheep sorrel	<i>Rumex acetosella</i>	Present
Slender oat	<i>Avena barbata</i>	Present
Smooth cats ear	<i>Hypochaeris glabra</i>	Present
Soft chess	<i>Bromus hordeaceus</i>	Present
Summer mustard	<i>Hirschfeldia incana</i>	Present
Telegraph weed	<i>Heterotheca grandiflora</i>	Present

Unknown forb	<i>Unknown forb</i>	Present
Unknown Lupine	<i>Lupinus sp.</i>	Present

## Plot C6

Plant species list from 2018: C6		
Common Name	Scientific Name	Dominance
Cheatgrass	<i>Bromus tectorum</i>	Medium
Ripgut brome	<i>Bromus diandrus</i>	Medium
Slender oat	<i>Avena barbata</i>	Medium
False brome	<i>Brachypodium distachyon</i>	Low/Medium
Foxtail barley	<i>Hordeum murinum</i>	Low/Medium
Burclover	<i>Medicago polymorpha</i>	Low
English plantain	<i>Plantago lanceolata</i>	Low
Hedge mustard	<i>Sisymbrium officinale</i>	Low
Horseweed	<i>Erigeron canadensis</i>	Low
Italian rye grass	<i>Festuca perennis</i>	Low
Italian thistle	<i>Carduus pycnocephalus</i>	Low
Jersey cudweed	<i>Pseudognaphalium luteoalbum</i>	Low
Longbeak stork's bill	<i>Erodium botrys</i>	Low
Miner's lettuce	<i>Claytonia sp.</i>	Low
Mouseear chickweed	<i>Cerastium glomeratum</i>	Low
Narrowleaf cottonrose	<i>Logfia gallica</i>	Low
Prickly lettuce	<i>Lactuca serriola</i>	Low
Rattail sixweeks grass	<i>Festuca myuros</i>	Low
Rose clover	<i>Trifolium hirtum</i>	Low
Sheep sorrel	<i>Rumex acetosella</i>	Low
Smooth cats ear	<i>Hypochaeris glabra</i>	Low
Stinging nettle	<i>Urtica sp.</i>	Low
Summer mustard	<i>Hirschfeldia incana</i>	Low
Unknown clover	<i>Trifolium sp.</i>	Low
Unknown forb	<i>Unknown forb</i>	Low
Unknown sow thistle	<i>Sonchus sp.</i>	Low

Plant species list from 2019: C6		
Common Name	Scientific Name	Dominance
Burclover	<i>Medicago polymorpha</i>	High
Rattail sixweeks grass	<i>Festuca myuros</i>	High
Smooth cats ear	<i>Hypochaeris glabra</i>	High
Longbeak stork's bill	<i>Erodium botrys</i>	Low/Medium
Rose clover	<i>Trifolium hirtum</i>	Low/Medium
Telegraph weed	<i>Heterotheca grandiflora</i>	Low/Medium

Cheatgrass	<i>Bromus tectorum</i>	Low
Chickweed	<i>Stellaria media</i>	Low
Clustered clover	<i>Trifolium glomeratum</i>	Low
Common catchfly	<i>Silene gallica</i>	Low
Crane's bill geranium	<i>Geranium molle</i>	Low
Cut leaved geranium	<i>Geranium dissectum</i>	Low
Deerweed	<i>Acmispon glaber var. glaber</i>	Low
English plantain	<i>Plantago lanceolata</i>	Low
False brome	<i>Brachypodium distachyon</i>	Low
Foxtail barley	<i>Hordeum murinum</i>	Low
Italian rye grass	<i>Festuca perennis</i>	Low
Italian thistle	<i>Carduus pycnocephalus</i>	Low
Miner's lettuce	<i>Claytonia sp.</i>	Low
Mouseear chickweed	<i>Cerastium glomeratum</i>	Low
Narrow leaved clover	<i>Trifolium angustifolium</i>	Low
Narrowleaf cottonrose	<i>Logfia gallica</i>	Low
Ripgut brome	<i>Bromus diandrus</i>	Low
Shamrock clover	<i>Trifolium dubium</i>	Low
Sheep sorrel	<i>Rumex acetosella</i>	Low
Shepherd's purse	<i>Capsella bursa-pastoris</i>	Low
Silver hairgrass	<i>Aira caryophyllea</i>	Low
Soft chess	<i>Bromus hordeaceus</i>	Low
Stinging nettle	<i>Urtica sp.</i>	Low
Summer mustard	<i>Hirschfeldia incana</i>	Low
Unknown Lupine	<i>Lupinus sp.</i>	Low
Unknown poppy	<i>Unknown poppy</i>	Low

Plant species list from 2020: C6		
Common Name	Scientific Name	Dominance
Rattail sixweeks grass	<i>Festuca myuros</i>	High
Ripgut brome	<i>Bromus diandrus</i>	High
Longbeak stork's bill	<i>Erodium botrys</i>	Medium
Red stemmed filaree	<i>Erodium cicutarium</i>	Medium
Smooth cats ear	<i>Hypochaeris glabra</i>	Medium
Clustered clover	<i>Trifolium glomeratum</i>	Low/Medium
Shamrock clover	<i>Trifolium dubium</i>	Low/Medium
Burclover	<i>Medicago polymorpha</i>	Low
Common catchfly	<i>Silene gallica</i>	Low
Common vetch	<i>Vicia sativa ssp. Nigra</i>	Low
Crimson clover	<i>Trifolium incarnatum</i>	Low
Foxtail barley	<i>Hordeum murinum</i>	Low
Italian thistle	<i>Carduus pycnocephalus</i>	Low

Jersey cudweed	<i>Pseudognaphalium luteoalbum</i>	Low
Narrow leaved clover	<i>Trifolium angustifolium</i>	Low
Narrowleaf cottonrose	<i>Logfia gallica</i>	Low
Rose clover	<i>Trifolium hirtum</i>	Low
Scarlet pimpernel	<i>Lysimachia arvensis</i>	Low
Sheep sorrel	<i>Rumex acetosella</i>	Low
Slender oat	<i>Avena barbata</i>	Low
Telegraph weed	<i>Heterotheca grandiflora</i>	Low
Unknown Lupine	<i>Lupinus sp.</i>	Low
Unknown vetch	<i>Vicia sp.</i>	Low

### Plot T1

Plant species list from 2018: T1		
Common Name	Scientific Name	Dominance
Ripgut brome	<i>Bromus diandrus</i>	High
Slender oat	<i>Avena barbata</i>	Medium/High
Foxtail barley	<i>Hordeum murinum</i>	Medium
Rattail sixweeks grass	<i>Festuca myuros</i>	Low/Medium
Summer mustard	<i>Hirschfeldia incana</i>	Low/Medium
Burclover	<i>Medicago polymorpha</i>	Low
Horseweed	<i>Erigeron canadensis</i>	Low
Italian rye grass	<i>Festuca perennis</i>	Low
Italian thistle	<i>Carduus pycnocephalus</i>	Low
Jersey cudweed	<i>Pseudognaphalium luteoalbum</i>	Low
Longbeak stork's bill	<i>Erodium botrys</i>	Low
Narrowleaf cottonrose	<i>Logfia gallica</i>	Low
Pink cudweed	<i>Pseudognaphalium ramosissimum</i>	Low
Red stemmed filaree	<i>Erodium cicutarium</i>	Low
Rose clover	<i>Trifolium hirtum</i>	Low
Tocalote	<i>Centaurea melitensis</i>	Low
Unknown Chenopodium	<i>Chenopodium sp.</i>	Low
Unknown forb	<i>Unknown forb</i>	Low
Unknown Hypochaeris	<i>Hypochaeris sp.</i>	Low
Unknown Lupine	<i>Lupinus sp.</i>	Low
Unknown sow thistle	<i>Sonchus sp.</i>	Low



Plant species list from 2019: T1		
Common Name	Scientific Name	Dominance
Burclover	<i>Medicago polymorpha</i>	High
Ripgut brome	<i>Bromus diandrus</i>	High
Italian thistle	<i>Carduus pycnocephalus</i>	Low/Medium
Rattail sixweeks grass	<i>Festuca myuros</i>	Low/Medium
Slender oat	<i>Avena barbata</i>	Low/Medium
Cheatgrass	<i>Bromus tectorum</i>	Low
Foxtail barley	<i>Hordeum murinum</i>	Low
Horseweed	<i>Erigeron canadensis</i>	Low
Italian rye grass	<i>Festuca perennis</i>	Low
Red stemmed filaree	<i>Erodium cicutarium</i>	Low
Soft chess	<i>Bromus hordeaceus</i>	Low
Stinging nettle	<i>Urtica sp.</i>	Low
Summer mustard	<i>Hirschfeldia incana</i>	Low
Telegraph weed	<i>Heterotheca grandiflora</i>	Low
Unknown Lupine	<i>Lupinus sp.</i>	Low
Unknown Pseudognaphalium (I'm calling queen anne's lace)	<i>Pseudognaphalium sp.</i>	Low
Whitestem filaree	<i>Erodium moschatum</i>	Low

Plant species list from 2020: T1		
Common Name	Scientific Name	Dominance
Rattail sixweeks grass	<i>Festuca myuros</i>	High
Ripgut brome	<i>Bromus diandrus</i>	Medium
Whitestem filaree	<i>Erodium moschatum</i>	Medium
Burclover	<i>Medicago polymorpha</i>	Low
Foxtail barley	<i>Hordeum murinum</i>	Low
Italian thistle	<i>Carduus pycnocephalus</i>	Low
Longbeak stork's bill	<i>Erodium botrys</i>	Low
Red stemmed filaree	<i>Erodium cicutarium</i>	Low
Scarlet pimpernel	<i>Lysimachia arvensis</i>	Low
Shamrock clover	<i>Trifolium dubium</i>	Low
Shepherd's purse	<i>Capsella bursa-pastoris</i>	Low
Slender oat	<i>Avena barbata</i>	Low
Soft chess	<i>Bromus hordeaceus</i>	Low
Summer mustard	<i>Hirschfeldia incana</i>	Low
Unknown forb	<i>Unknown forb</i>	Low

**Plot T2**

<b>Plant species list from 2018: T2</b>		
<b>Common Name</b>	<b>Scientific Name</b>	<b>Dominance</b>
Foxtail barley	<i>Hordeum murinum</i>	High
Clustered clover	<i>Trifolium glomeratum</i>	Medium/High
Rattail sixweeks grass	<i>Festuca myuros</i>	Low/Medium
Ripgut brome	<i>Bromus diandrus</i>	Low/Medium
Silver hairgrass	<i>Aira caryophyllea</i>	Low/Medium
Subterranean clover	<i>Trifolium subterraneum</i>	Low/Medium
Unknown Hypochaeris	<i>Hypochaeris sp.</i>	Low/Medium
Yarrow	<i>Achillea millefolium</i>	Low
Annual blue grass	<i>Poa annua</i>	Low
Asian ponysfoot	<i>Dichondra micrantha</i>	Low
Bird's eye speedwell	<i>Veronica persica</i>	Low
Bird's foot trefoil	<i>Lotus corniculatus</i>	Low
Cheatgrass	<i>Bromus tectorum</i>	Low
Cheeseweed	<i>Malva parviflora</i>	Low
Crimson clover	<i>Trifolium incarnatum</i>	Low
English plantain	<i>Plantago lanceolata</i>	Low
Four leaved allseed	<i>Polycarpon tetraphyllum</i> var. <i>tetraphyllum</i>	Low
Horseweed	<i>Erigeron canadensis</i>	Low
Italian rye grass	<i>Festuca perennis</i>	Low
Italian thistle	<i>Carduus pycnocephalus</i>	Low
Little rattlesnake grass	<i>Briza minor</i>	Low
Longbeak stork's bill	<i>Erodium botrys</i>	Low
Milk thistle	<i>Silybum marianum</i>	Low
Red stemmed filaree	<i>Erodium cicutarium</i>	Low
Rose clover	<i>Trifolium hirtum</i>	Low
Shamrock clover	<i>Trifolium dubium</i>	Low
Sheep sorrel	<i>Rumex acetosella</i>	Low
Slender oat	<i>Avena barbata</i>	Low
Soft chess	<i>Bromus hordeaceus</i>	Low
Stinging nettle	<i>Urtica sp.</i>	Low
Summer mustard	<i>Hirschfeldia incana</i>	Low
Unknown Brassicaceae	<i>Brassicaceae sp.</i>	Low
Unknown forb	<i>Unknown forb</i>	Low
Unknown rumex	<i>Rumex sp.</i>	Low

<b>Plant species list from 2019: T2</b>		
<b>Common Name</b>	<b>Scientific Name</b>	<b>Dominance</b>
Foxtail barley	<i>Hordeum murinum</i>	High
Sheep sorrel	<i>Rumex acetosella</i>	Medium/High

Rattail sixweeks grass	<i>Festuca myuros</i>	Medium
Ripgut brome	<i>Bromus diandrus</i>	Medium
Clustered clover	<i>Trifolium glomeratum</i>	Low/Medium
Bird's eye speedwell	<i>Veronica persica</i>	Low
Chickweed	<i>Stellaria media</i>	Low
Crane's bill geranium	<i>Geranium molle</i>	Low
Four leaved allseed	<i>Polycarpon tetraphyllum</i> <i>var. tetraphyllum</i>	Low
Italian thistle	<i>Carduus pycnocephalus</i>	Low
Shamrock clover	<i>Trifolium dubium</i>	Low
Smooth cats ear	<i>Hypochaeris glabra</i>	Low
Soft chess	<i>Bromus hordeaceus</i>	Low
Subterranean clover	<i>Trifolium subterraneum</i>	Low
Summer mustard	<i>Hirschfeldia incana</i>	Low
Unknown forb	<i>Unknown forb</i>	Low
Unknown rush	<i>Unknown rush</i>	Low

Plant species list from 2020: T2		
Common Name	Scientific Name	Dominance
Clustered clover	<i>Trifolium glomeratum</i>	High
Four leaved allseed	<i>Polycarpon tetraphyllum</i> <i>var. tetraphyllum</i>	High
Smooth cats ear	<i>Hypochaeris glabra</i>	Medium/High
Whitestem filaree	<i>Erodium moschatum</i>	Medium/High
Mouseear chickweed	<i>Cerastium glomeratum</i>	Low/Medium
Annual blue grass	<i>Poa annua</i>	Low
Brass buttons	<i>Cotula australis</i>	Low
Burclover	<i>Medicago polymorpha</i>	Low
Cheatgrass	<i>Bromus tectorum</i>	Low
Cheeseweed	<i>Malva parviflora</i>	Low
Common catchfly	<i>Silene gallica</i>	Low
Foxtail barley	<i>Hordeum murinum</i>	Low
Italian thistle	<i>Carduus pycnocephalus</i>	Low
Rattail sixweeks grass	<i>Festuca myuros</i>	Low
Ripgut brome	<i>Bromus diandrus</i>	Low
Rose clover	<i>Trifolium hirtum</i>	Low
Sheep sorrel	<i>Rumex acetosella</i>	Low
Shepherd's purse	<i>Capsella bursa-pastoris</i>	Low
Slender oat	<i>Avena barbata</i>	Low
Soft chess	<i>Bromus hordeaceus</i>	Low
Summer mustard	<i>Hirschfeldia incana</i>	Low
Unknown Brassicaceae	<i>Brassicaceae sp.</i>	Low
Unknown clover	<i>Trifolium sp.</i>	Low
Unknown Lupine	<i>Lupinus sp.</i>	Low

Unknown rumex	<i>Rumex sp.</i>	Low
Stinging nettle	<i>Urtica sp.</i>	Present

### Plot T3

Plant species list from 2018: T3		
Common Name	Scientific Name	Dominance
Italian rye grass	<i>Festuca perennis</i>	High
Slender oat	<i>Avena barbata</i>	High
Clustered clover	<i>Trifolium glomeratum</i>	Medium
Foxtail barley	<i>Hordeum murinum</i>	Medium
Cheatgrass	<i>Bromus tectorum</i>	Low/Medium
Longbeak stork's bill	<i>Erodium botrys</i>	Low/Medium
Rattail sixweeks grass	<i>Festuca myuros</i>	Low/Medium
Ripgut brome	<i>Bromus diandrus</i>	Low/Medium
Sheep sorrel	<i>Rumex acetosella</i>	Low/Medium
Summer mustard	<i>Hirschfeldia incana</i>	Low/Medium
Annual blue grass	<i>Poa annua</i>	Low
Bird's eye speedwell	<i>Veronica persica</i>	Low
Burclover	<i>Medicago polymorpha</i>	Low
Cheeseweed	<i>Malva parviflora</i>	Low
Creeping wood sorrel	<i>Oxalis corniculata</i>	Low
Crimson clover	<i>Trifolium incarnatum</i>	Low
Hedge mustard	<i>Sisymbrium officinale</i>	Low
Horseweed	<i>Erigeron canadensis</i>	Low
Italian thistle	<i>Carduus pycnocephalus</i>	Low
Jersey cudweed	<i>Pseudognaphalium luteoalbum</i>	Low
Miner's lettuce	<i>Claytonia sp.</i>	Low
Mouseear chickweed	<i>Cerastium glomeratum</i>	Low
Narrowleaf cottonrose	<i>Logfia gallica</i>	Low
Orchard grass	<i>Dactylis glomerata</i>	Low
Prickly lettuce	<i>Lactuca serriola</i>	Low
Puncture vine	<i>Tribulus terrestris</i>	Low
Purple sand spurry	<i>Spergularia rubra</i>	Low
Red stemmed filaree	<i>Erodium cicutarium</i>	Low
Rescue grass	<i>Bromus catharticus</i>	Low
Rose clover	<i>Trifolium hirtum</i>	Low
Scarlet pimpernel	<i>Lysimachia arvensis</i>	Low
Soft chess	<i>Bromus hordeaceus</i>	Low
Spreading hedgeparsley	<i>Torilis arvensis</i>	Low
Stinging nettle	<i>Urtica sp.</i>	Low
Telegraph weed	<i>Heterotheca grandiflora</i>	Low
Unknown clover	<i>Trifolium sp.</i>	Low
Unknown forb	<i>Unknown forb</i>	Low

Unknown Hypochaeris	<i>Hypochaeris sp.</i>	Low
Unknown rumex	<i>Rumex sp.</i>	Low
Unknown sow thistle	<i>Sonchus sp.</i>	Low

Plant species list from 2019: T3		
Common Name	Scientific Name	Dominance
Burclover	<i>Medicago polymorpha</i>	High
Ripgut brome	<i>Bromus diandrus</i>	High
Rattail sixweeks grass	<i>Festuca myuros</i>	Medium
Smooth cats ear	<i>Hypochaeris glabra</i>	Medium
Cheatgrass	<i>Bromus tectorum</i>	Low/Medium
Slender oat	<i>Avena barbata</i>	Low/Medium
Annual blue grass	<i>Poa annua</i>	Low
Clustered clover	<i>Trifolium glomeratum</i>	Low
Clustered dock	<i>Rumex conglomeratus</i>	Low
Common catchfly	<i>Silene gallica</i>	Low
Crimson clover	<i>Trifolium incarnatum</i>	Low
False brome	<i>Brachypodium distachyon</i>	Low
Foxtail barley	<i>Hordeum murinum</i>	Low
Hairy cats ear	<i>Hypochaeris radicata</i>	Low
Horseweed	<i>Erigeron canadensis</i>	Low
Italian rye grass	<i>Festuca perennis</i>	Low
Italian thistle	<i>Carduus pycnocephalus</i>	Low
Jersey cudweed	<i>Pseudognaphalium luteoalbum</i>	Low
Longbeak stork's bill	<i>Erodium botrys</i>	Low
Narrow leaved clover	<i>Trifolium angustifolium</i>	Low
Narrowleaf cottonrose	<i>Logfia gallica</i>	Low
Puncture vine	<i>Tribulus terrestris</i>	Low
Rose clover	<i>Trifolium hirtum</i>	Low
Sheep sorrel	<i>Rumex acetosella</i>	Low
Soft chess	<i>Bromus hordeaceus</i>	Low
Stinging nettle	<i>Urtica sp.</i>	Low
Summer mustard	<i>Hirschfeldia incana</i>	Low
Unknown clover	<i>Trifolium sp.</i>	Low
Unknown forb	<i>Unknown forb</i>	Low
Unknown Lupine	<i>Lupinus sp.</i>	Low
Unknown sow thistle	<i>Sonchus sp.</i>	Low
Unknown thistle	<i>Unknown thistle</i>	Low
Whitestem filaree	<i>Erodium moschatum</i>	Low
Wild radish	<i>Raphanus sativus</i>	Low
Red stemmed filaree	<i>Erodium cicutarium</i>	Low

**Plant species list from 2020: T3**

<b>Common Name</b>	<b>Scientific Name</b>	<b>Dominance</b>
Clustered clover	<i>Trifolium glomeratum</i>	High
Rattail sixweeks grass	<i>Festuca myuros</i>	High
Ripgut brome	<i>Bromus diandrus</i>	Medium
Smooth cats ear	<i>Hypochaeris glabra</i>	Medium
Annual blue grass	<i>Poa annua</i>	Low
Burclover	<i>Medicago polymorpha</i>	Low
Cheatgrass	<i>Bromus tectorum</i>	Low
Cheeseweed	<i>Malva parviflora</i>	Low
Corn spurry	<i>Spergula arvensis</i>	Low
Foxtail barley	<i>Hordeum murinum</i>	Low
Italian thistle	<i>Carduus pycnocephalus</i>	Low
Jersey cudweed	<i>Pseudognaphalium luteoalbum</i>	Low
Longbeak stork's bill	<i>Erodium botrys</i>	Low
Red stemmed filaree	<i>Erodium cicutarium</i>	Low
Rose clover	<i>Trifolium hirtum</i>	Low
Shamrock clover	<i>Trifolium dubium</i>	Low
Slender oat	<i>Avena barbata</i>	Low
Soft chess	<i>Bromus hordeaceus</i>	Low
Summer mustard	<i>Hirschfeldia incana</i>	Low
Telegraph weed	<i>Heterotheca grandiflora</i>	Low
Unknown Lupine	<i>Lupinus sp.</i>	Low